

BASS

CONCUBINE CHRONICLES

RB FUNKESTRA - 'CONCUBINE CHRONICLES' (2009)

S. REDTENBACHER

♩ = 91 w/AUTO WAH

J8 FUNK F13

f *p* *f*

A TENOR FILLS

mf

mf

B

mf

mf D7 A[^] A_{Mi}¹¹ B7^{#9}

C RHODES FILLS (NOT AFTER D.S.)

mf

CONCUBINE CHRONICLES (BASS)

2

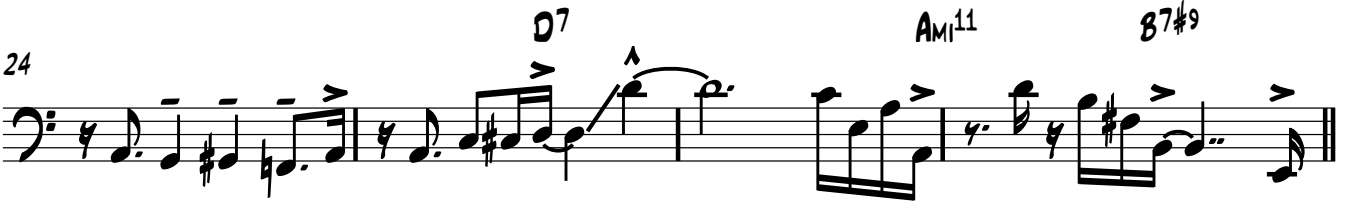
18



20



24



E7#9

W/GUITAR

28



30



32



CONCUBINE CHRONICLES (BASS)



RELEASE (NC)

3

34

Musical staff with bass clef, 4/4 time signature, and various rhythmic patterns including eighth and sixteenth notes.

F ORGAN SOLO

37

Am⁷

D/F# G OPEN

Musical staff with bass clef, 4/4 time signature, and notes. Includes a *mf* dynamic marking and repeat signs.

ON CUE **G**

41

B7#9

F13

Musical staff with bass clef, 4/4 time signature, and notes. Includes a *f* dynamic marking, a triplet of eighth notes, and a *GLISS.* instruction.

45

DRUMS ONLY

Musical staff with bass clef, 4/4 time signature, and notes. Includes a *p* to *f* dynamic marking and a triplet of eighth notes. Ends with **D.S. AL CODA**.



51

B7#5#9

WATCH DRUMS

B^bMA⁷

Am¹¹

Musical staff with bass clef, 4/4 time signature, and notes. Includes a *WATCH DRUMS* instruction.